
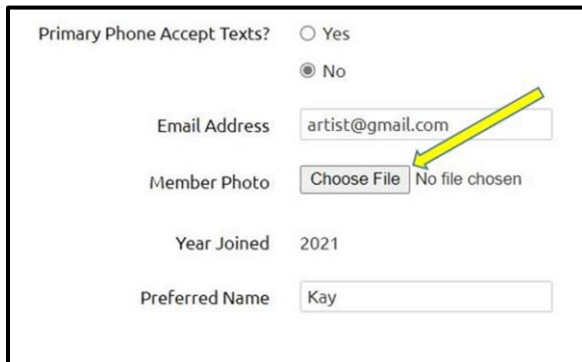


## WSI – Adding Your Member Photo

Log in to the WSI Website (<https://watercolorsofindiana.org>) and click on icon  to select “View Profile”. Then click “EDIT PROFILE”. Follow the instructions below to add your photo to the WSI membership information.



Primary Phone Accept Texts?  Yes  
 No

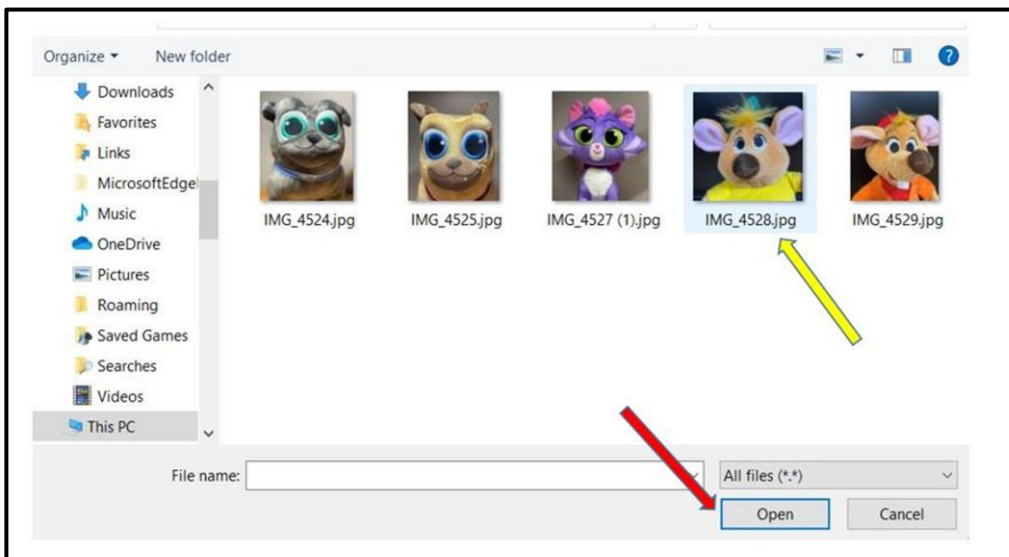
Email Address

Member Photo  No file chosen

Year Joined 2021

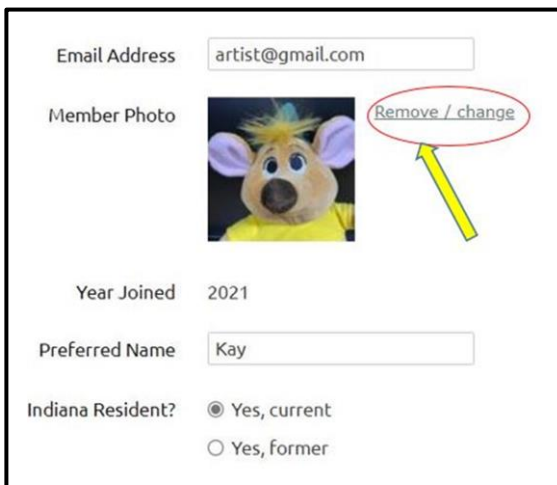
Preferred Name

Click on “Choose File”. This will take you to your files on your computer. You can choose a photo of you to share on the website with other members.




Click on the photo you would like to use.

Then click on the “Open” button.



Email Address

Member Photo  [Remove / change](#)

Year Joined 2021

Preferred Name

Indiana Resident?  Yes, current  
 Yes, former

Your picture will be inserted into your “Member Photo” field.

*Make sure to click “Save” after you are finished.*

**If** you want to change your photo at any time, go through the above process and select “**Remove / change**”. This will remove the current photo and you can replace with a new photo.

**Please contact a Wild Apricot team member if you need assistance.**